

SCCG50 & SCCP50 Service Parts

This is the illustrated parts list for the SCCG50M and the SCCP50M Residential Ice Machines

The condenser fan motor, fan blade, fan motor brackets and condenser shroud changed in August 2009. The model number also changed to an A series: SCCG50MA-1. and SCCP50MA-1

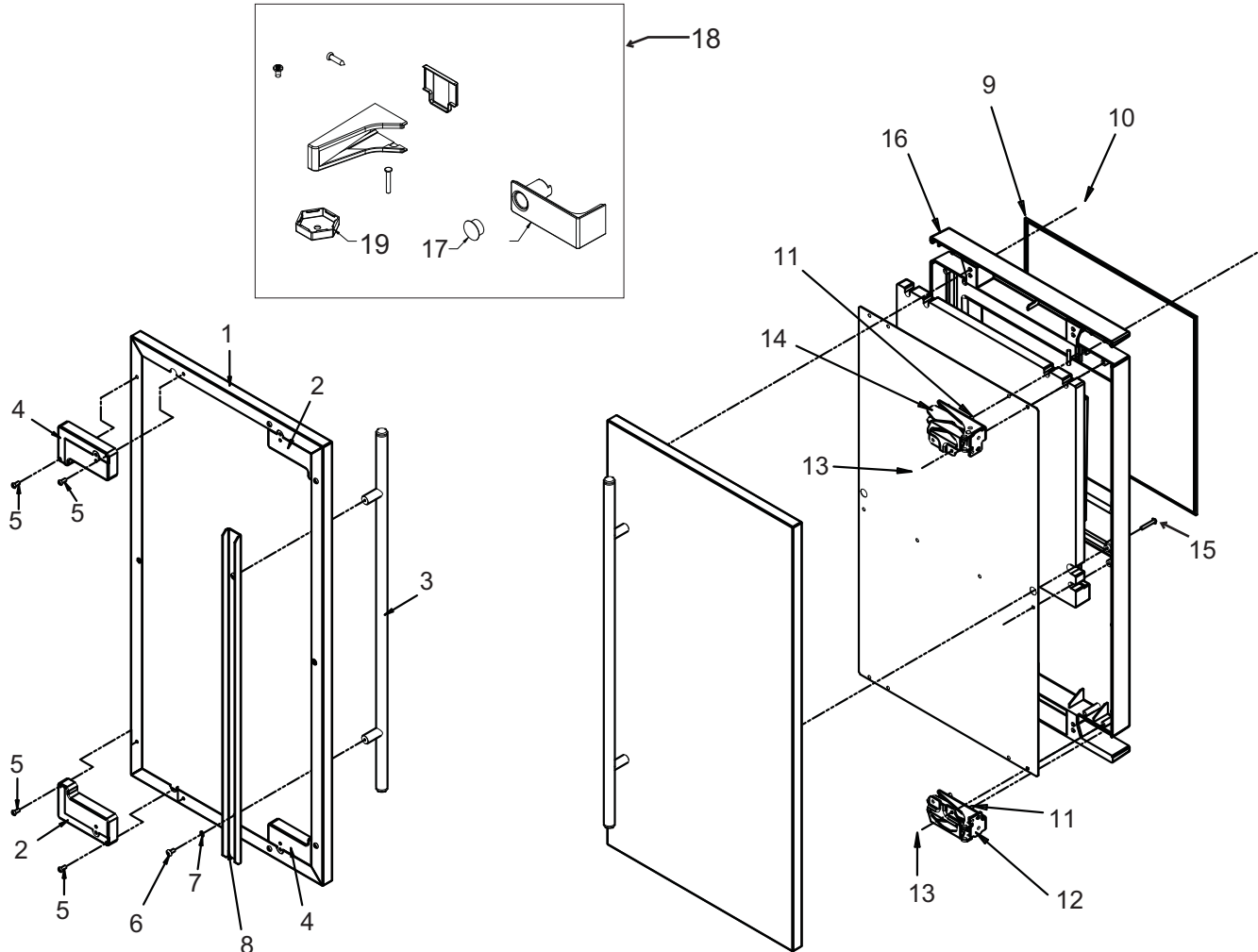
When ordering a service part, always refer to the complete model number of the equipment being repaired to be sure of obtaining the correct part. Many times there are slight differences between models, and having the complete model number will aide in selecting the correct part.

Table of Contents

| | |
|------------------------------------|--------|
| Door | Page 2 |
| Cabinet | Page 3 |
| Reservoir and Spray Pump | Page 4 |
| Refrigeration | Page 5 |
| Under Bin Parts | Page 6 |
| Control System | Page 7 |
| Schematic Diagram | Page 8 |
| Wiring Diagram | Page 9 |

SCCG50 & SCCP50 Service Parts

Door

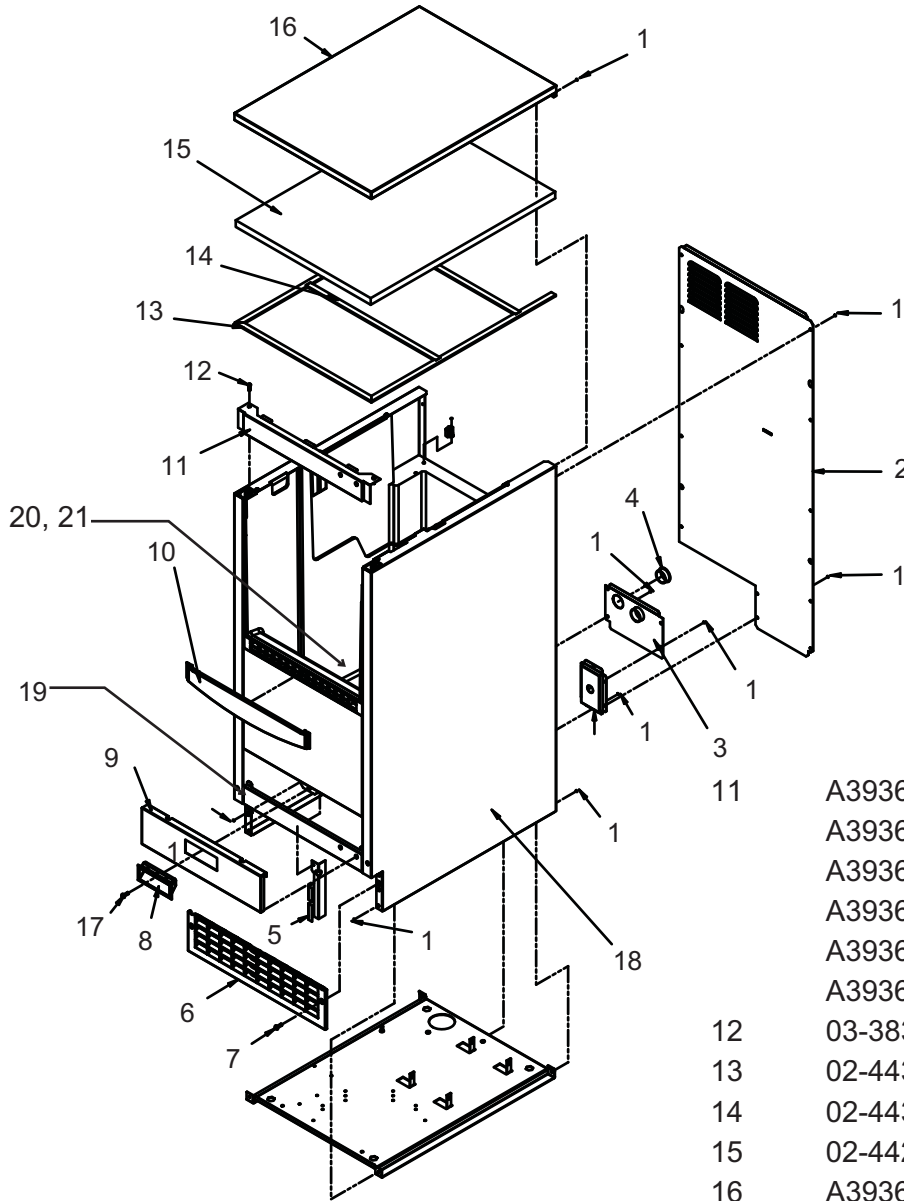


Items 17 and 19 included with item 18, package shipped loose in bin.

| Item Number | Part Number | Description | Item Number | Part Number | Description |
|-------------|-------------|---|-------------|-------------|--|
| 1 | | Door panel kits. Kits include items 1 thru 8. | 7 | 03-1410-07 | Lockwasher |
| | KDFW | White panel, white handle | 8 | A39390-001 | Support bracket |
| | KDFWS | White panel, SS handle | 9 | 13-0949-03 | Door gasket |
| | KDFB | Black panel, black handle | 10 | 03-1404-40 | Screw |
| | kDFBS | Black panel, SS handle | 11 | 03-3818-01 | Screw - hinge to cabinet |
| | KDFS | SS panel, SS handle | 12 | 02-3866-04 | Hinge - top right/bottom left |
| 2 | 02-4433-01 | Corner block, RH | 13 | 03-1404-24 | Screw - hinge to door |
| 3 | 02-4430-42 | Handle, white | 14 | 02-3866-03 | Hinge |
| | 02-4430-52 | Handle, black | 15 | 03-1403-67 | Screw |
| | 02-4430-01 | Handle, SS | 16 | A39513-001 | Door assembly, does not include door panel or hinges |
| 4 | 02-4433-02 | Corner block, LH | 17 | 02-1875-07 | Hole plug |
| 5 | 03-1531-01 | Screw | 18 | 02-4474-01 | Hinge package |
| 6 | 03-3811-01 | Screw | 19 | 02-4415-20 | Leg cap, pack of 4 |

SCCG50 & SCCP50 Service Parts

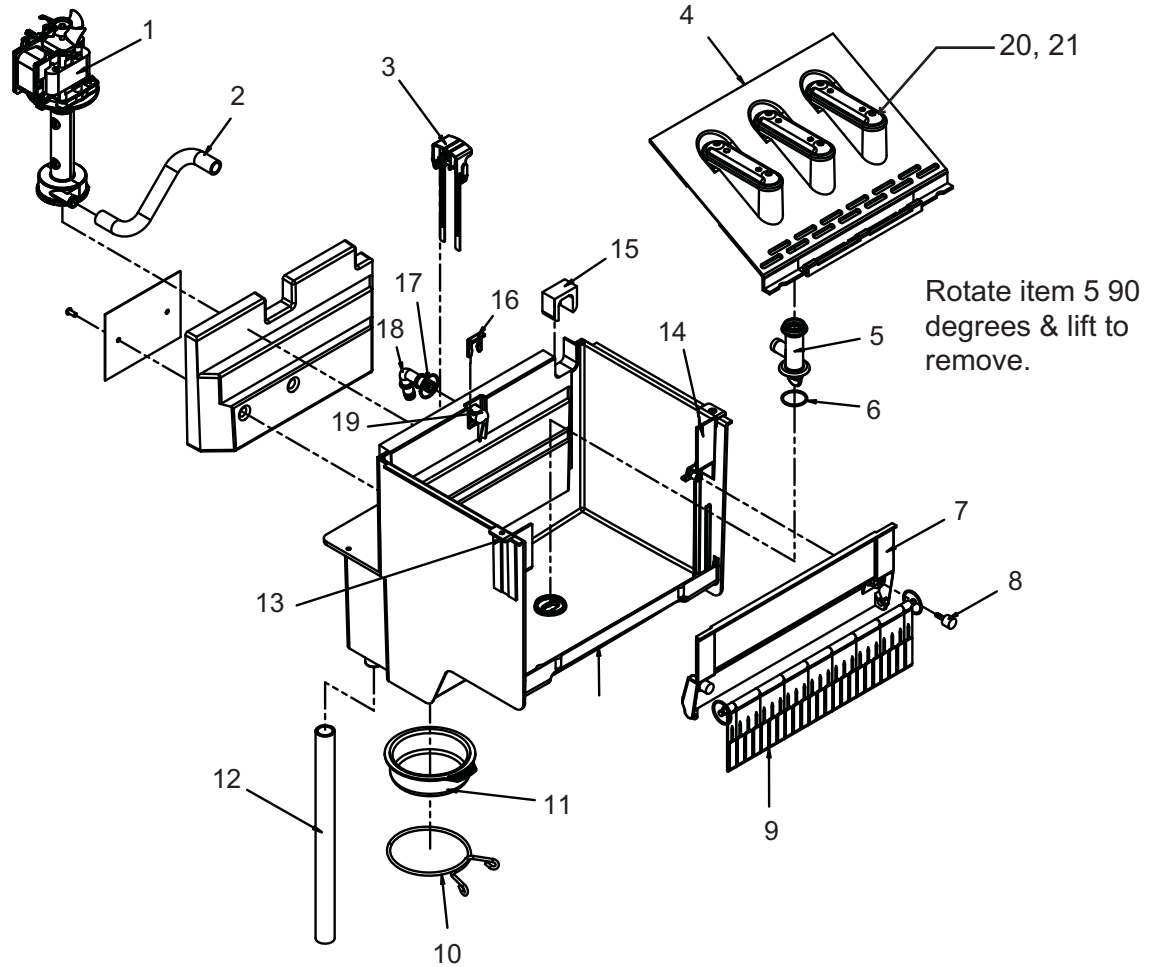
Cabinet



| Item Number | Part Number | Description |
|-------------|-------------|-----------------------------|
| 1 | 03-1531-01 | Screw |
| 2 | A39363-001 | Back panel |
| 3 | A39389-001 | Utility routing bracket |
| 4 | 12-1213-11 | Snap bushing |
| 5 | A39392-001 | Srv panel mntg bracket |
| 6 | 02-4390-01 | Kickplate |
| 7 | 03-1403-86 | Screw |
| 8 | 02-4441-01 | Panel handle |
| 9 | A39381-001 | Service panel, white |
| | A39381-002 | Service panel, black |
| | A39381-003 | Service panel, SS |
| 10 | 02-4392-01 | Bin edging |
| 11 | A39364-001 | Top hinge brkt, RH white |
| | A39364-002 | Top hinge brkt, RH black |
| | A39364-003 | Top hinge brkt, RH SS |
| | A39364-004 | Top hinge brkt, LH white |
| | A39364-005 | Top hinge brkt, LH black |
| | A39364-006 | Top hinge brkt, LH SS |
| 12 | 03-3836-03 | Screw |
| 13 | 02-4438-01 | Gasket |
| 14 | 02-4438-02 | Gasket strip |
| 15 | 02-4426-01 | Insulation pad |
| 16 | A39362-001 | Top panel, white |
| | A39362-002 | Top panel, black |
| | A39362-003 | Top panel, SS |
| 17 | 03-1403-86 | Screw |
| 18 | A39378-001 | White cabinet & bin |
| | A39378-002 | Black cabinet & bin |
| | A39378-003 | SS cabinet & bin |
| 19 | A39385-001 | Btm hinge brkt, right white |
| | A39385-002 | Btm hinge brkt, right black |
| | A39385-003 | Btm hinge brkt, right SS |
| | A39385-004 | Btm hinge brkt, left white |
| | A39385-005 | Btm hinge brkt, left black |
| | A39385-006 | Btm hinge brkt, left SS |
| 20 | A34816-001 | Bin stat bracket/scoop hldr |
| 21 | 02-4391-03 | Scoop |

SCCG50 & SCCP50 Service Parts

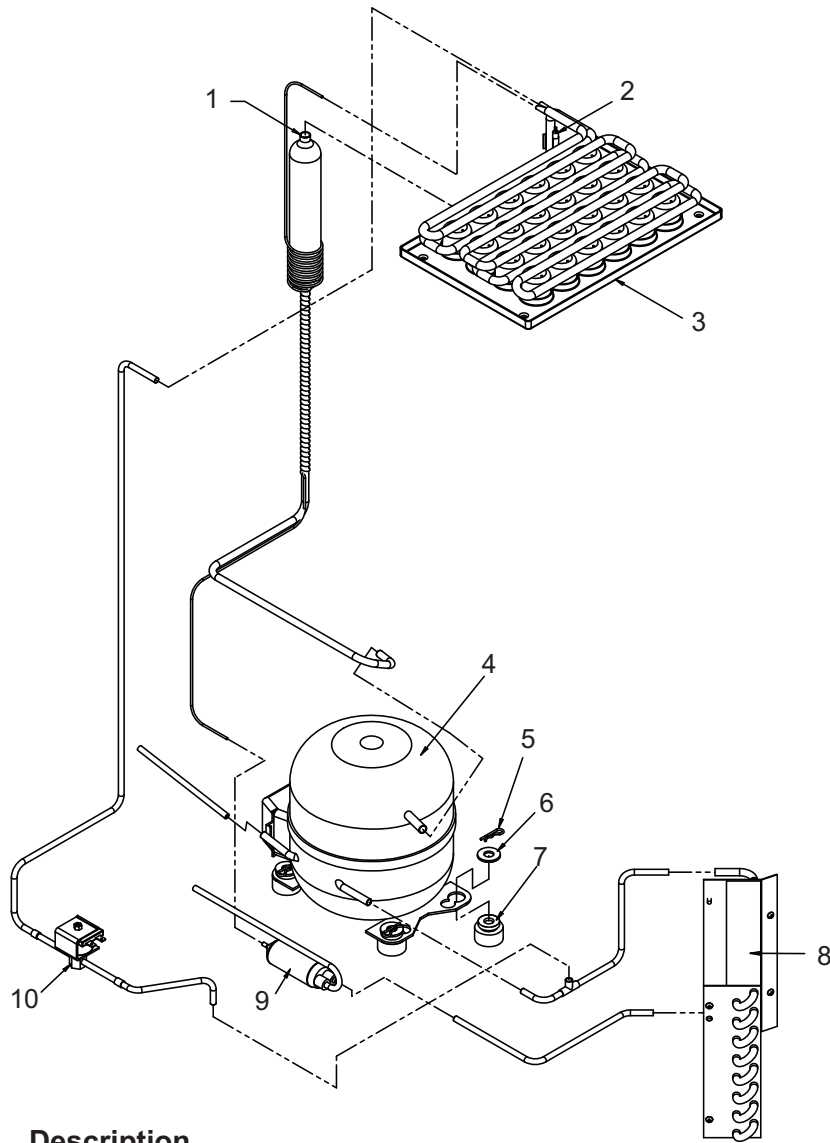
Reservoir and Spray Pump



| Item Number | Part Number | Description |
|-------------|-------------|--|
| 1 | 12-2986-21 | Water pump |
| 2 | 02-4379-01 | Pump discharge hose |
| 3 | A39030-023 | Water probe |
| 4 | 02-4371-02 | Spray platform |
| 5 | 02-4368-01 | Water Tee |
| 6 | 13-0617-11 | O-ring |
| 7 | 02-4365-01 | Front bracket |
| 8 | 03-3892-01 | Thumb screw |
| 9 | A39357-001 | Curtain |
| 10 | 02-4383-01 | Clamp |
| 11 | 02-4369-01 | Drain cap |
| 12 | 02-4428-01 | Drain tube |
| 13 | 02-4375-01 | Evap bracket, left |
| 14 | 02-4375-02 | Evap bracket, right |
| 15 | 02-4475-01 | Grommet |
| 16 | 02-4381-03 | Clip |
| 17 | 13-0617-04 | O-ring |
| 18 | 02-4381-01 | Barbed fitting |
| 19 | 02-4381-02 | Spout |
| 20 | 02-4373-01 | O-ring |
| 21 | 02-4370-21 | Spray nozzle, kit. Set of 3 nozzles, o-rings, screws and nuts. |

SCCG50 & SCCP50 Service Parts

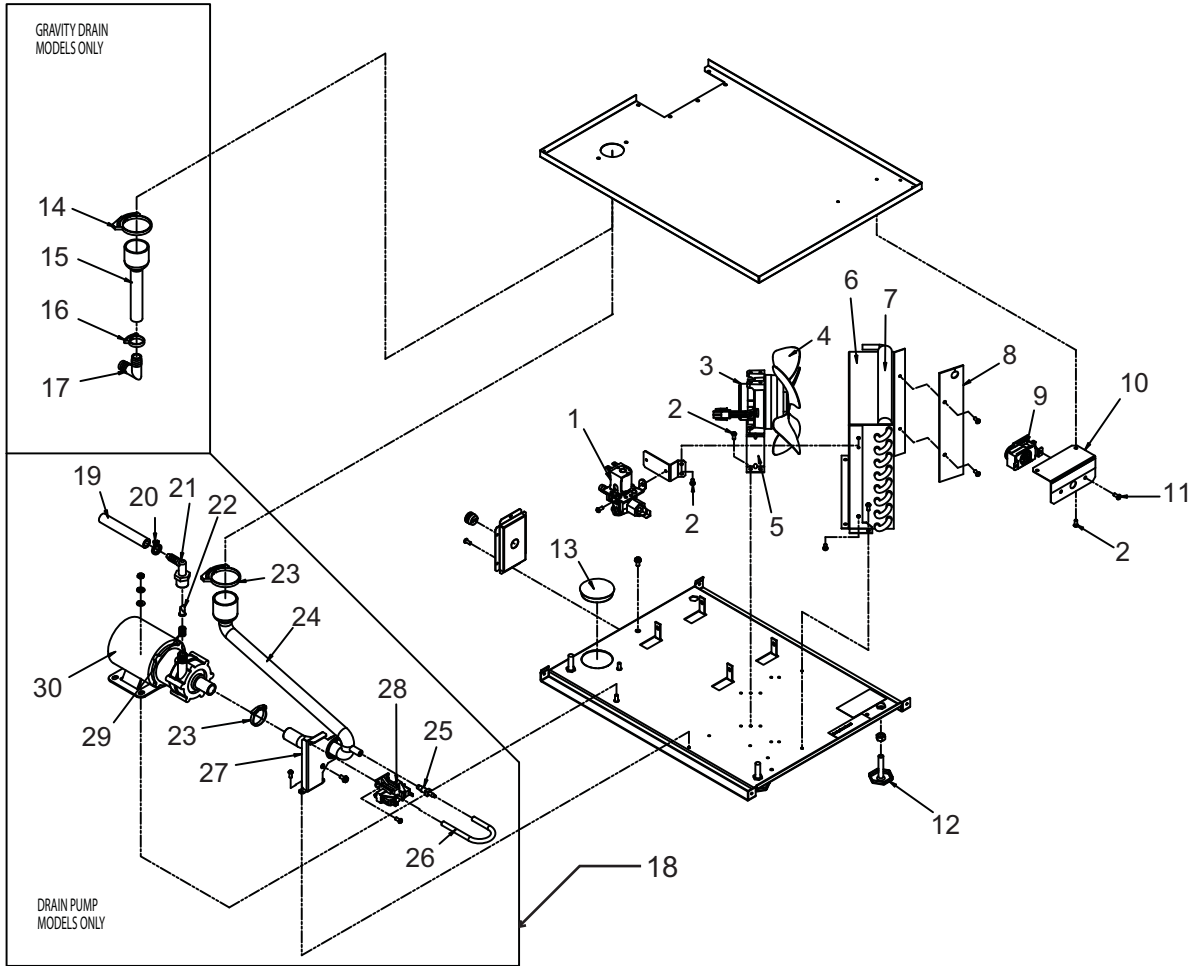
Refrigeration



| Item Number | Part Number | Description |
|---|-------------|-------------------------------|
| 1 | A39384-001 | Suction line accumulator assy |
| 2 | 11-0577-01 | Thermistor |
| 3 | 02-4376-01 | Evaporator |
| 4 | 18-8939-21 | Compressor |
| Compressor includes overload, relay and drier | | |
| 4a | 18-8939-51 | Overload |
| 4b | 18-8939-52 | Relay |
| 5 | 03-3821-01 | Clip |
| 6 | 03-1407-08 | Washer |
| 7 | 18-4700-28 | Grommet |
| 8 | 18-8940-01 | Condenser |
| 9 | 02-4416-01 | Drier |
| 10 | 11-0562-21 | Hot gas valve |
| 10a | 11-0562-22 | HGV coil |

SCCG50 & SCCP50 Service Parts

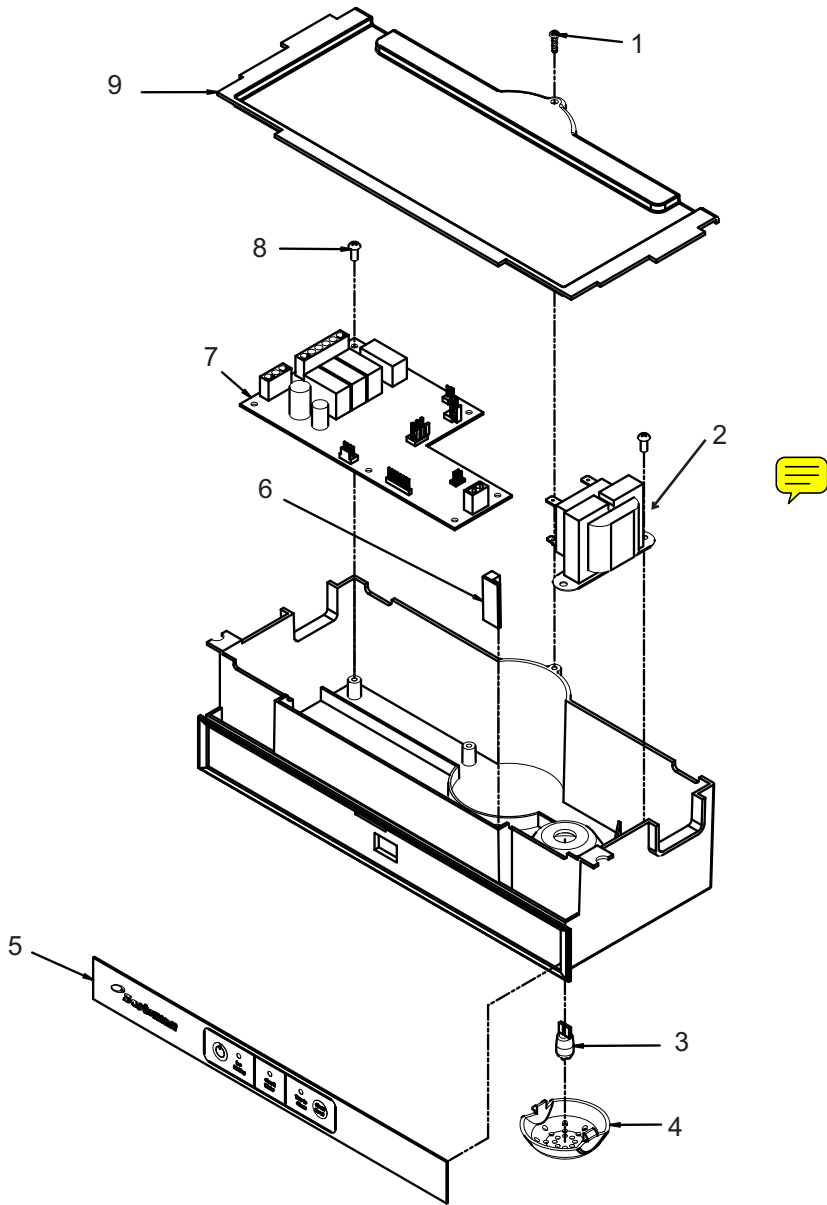
Under Bin Parts



| Item Number | Part Number | Description | Item Number | Part Number | Description |
|--|-------------|------------------------------|-------------|-------------|-------------------|
| | | | 12a | 02-4415-01 | Leg cap |
| | | | 13 | 02-1875-18 | Hole plug |
| 1 | 12-2990-01 | Inlet water sol valve | 14 | 02-2814-13 | Hose clamp |
| 2 | 03-1531-01 | Screw | 15 | 02-4412-01 | Drain hose |
| 3 | 12-2396-02 | Fan motor | 16 | 02-2814-08 | Hose clamp |
| | 12-3024-01 | Fan motor, A series | 17 | 16-0671-01 | Elbow |
| 4 | 18-8941-01 | Fan blade | 18 | A39462-021 | Pump kit |
| | 02-4197-01 | Fan blade, A series | 19 | A37334-001 | Discharge hose |
| 5 | A39555-001 | Fan motor bracket | 20 | 02-0534-02 | Hose clamp |
| A39555-001 bracket attaches to shroud. Use on prior models requires 2 brackets & A39359-001. | | | 21 | 02-3522-01 | Elbow |
| | A39556-001 | Fan motor bracket A series | 22 | 02-3374-01 | Check valve |
| 6 | A39359-001 | Fan shroud | 23 | 02-2814-13 | Hose clamp |
| | A39460-001 | Fan shroud, A series | 24 | 02-4413-01 | Drain tube |
| 7 | 13-0909-01 | Gasket, order 1 & cut to fit | 25 | 02-3406-01 | Barbed connector |
| 8 | 02-4450-01 | Air baffle | 26 | 05-0591-01 | Switch hose |
| 9 | 11-0578-21 | Thermostat | 27 | A39370-001 | Switch bracket |
| 10 | A39379-001 | Thermostat bracket | 28 | 11-0504-01 | Pressure switch |
| 11 | 03-1403-16 | Screw | 29 | 03-3904-01 | Spring |
| 12 | 03-1608-01 | Leg leveler | 30 | 12-2503-21 | Pump & motor only |

SCCG50 & SCCP50 Service Parts

Control System



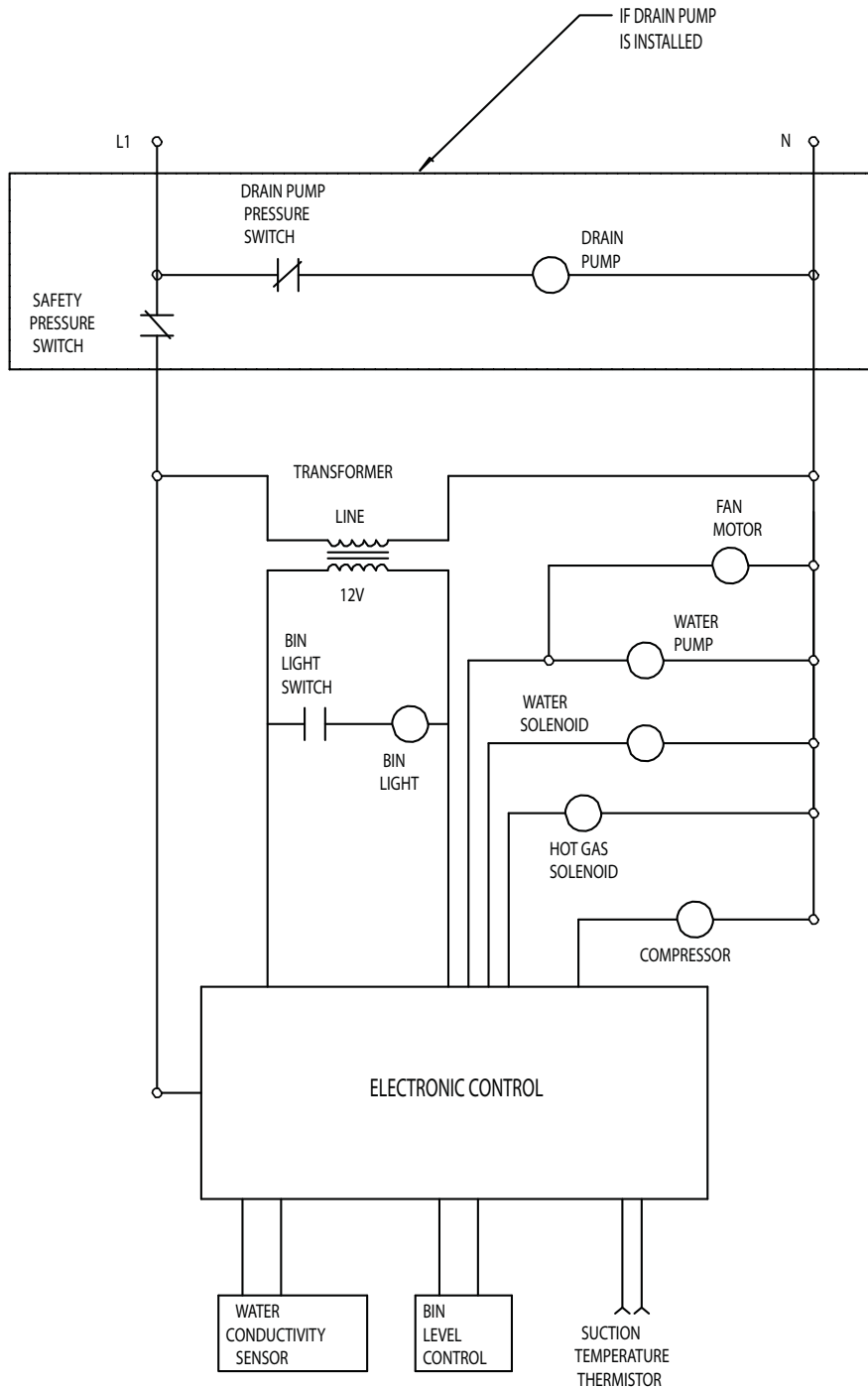
| Item Number | Part Number | Description |
|-------------|-------------|------------------|
| 1 | 03-3836-03 | Screw |
| 2 | 12-2924-01 | Transformer |
| 3 | 12-2980-01 | Bulb |
| 4 | 02-4380-01 | Light cover |
| 5 | 11-0574-01 | Switch panel |
| 6 | 12-2980-03 | Bin light sensor |
| 7 | 11-0573-24 | Controller |
| 8 | 03-1531-01 | Screw |
| 9 | 02-4386-01 | Cover |

Not Shown:

| | | |
|-----|------------|----------------------------|
| NS1 | 12-2980-02 | Bin light harness & socket |
| NS2 | 12-3003-01 | Bin stat harness |
| NS3 | 12-3000-02 | Hi voltage harness, lower |
| NS4 | 12-3000-01 | Hi voltage harness, upper |
| NS5 | 12-2992-01 | Water sensor harness |

SCCG50 & SCCP50 Service Parts

Schematic Diagram



SWITCHES ON THIS UNIT
SHOWN IN FREEZE CYCLE
WITH DRAIN PUMP IN OPERATION
AND BIN DOOR CLOSED

SCCG50 & SCCP50 Service Parts

Wiring Diagram

