

# SCOTSMAN

MODULAR AIR, WATER, REMOTE COOLED FLAKE ICE MACHINE

## FME2404

VOLUME PRODUCTION • 24 HOUR



Based on Air/Water Temperatures	Air-Cooled		Water-Cooled		Remote	
	70°/50° lbs./kg.	90°/70° lbs./kg.	70°/50° lbs./kg.	90°/70° lbs./kg.	70°/50° lbs./kg.	90°/70° lbs./kg.
FME2404-32	2455/1114	1800/816	2390/1084	2020/916	1960/889	1780/807
FME2404-3	2455/1114	1800/816	2390/1084	2020/916	1960/889	1780/807

### SCOTSMAN'S NEW FLAKED ICE MACHINES with AutoSentry™

- AutoSentry™ Monitoring System constantly checks workload on gearbox shutting down system before a problem develops preventing costly repairs.
- Electrical conductivity water sensor eliminates low or no water failures and cannot be affected by adverse water conditions.
- Plastic drain pan with larger outlet provides greater ability to quickly channel water away preventing particulate build-up and rust.
- Rust and restriction free drain system features one-piece plastic drain tubes with larger ID for obstruction-free water flow.
- Durable, high grade stainless steel construction with massive, self-aligning spherical roller bearings; patented double-flight auger that evenly distributes the load; and heavy duty direct drive gearbox for high reliability and long life.

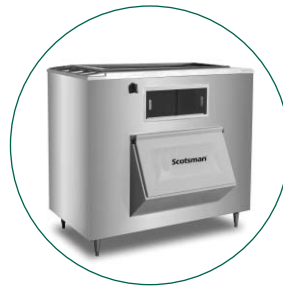
**WARRANTY** See your dealer for complete warranty details.

- 3 years parts on all components.
- 3 years labor on all components.
- 5 years parts on compressor.

### BIN OPTIONS:



BIN: BH900



BIN: BH1300



**FLAKED ICE**  
Inexpensive to produce, used in produce and fish displays.

#### SCOTSMAN MODULAR BINS

 Certified & rated in accordance with ARI standard 820-95

Model Number	Dimensions W"xD"xH" *	ARI Bin Capacity lbs.	Application Capacity lbs.	Finish **	Ship Weight lbs./kg.
BH800	42 x 31.5 x 44	580	740	SS OR BB	165/75
BH900	48.2 x 33.75 x 44	740	940	SS OR BB	185/84
BH1100	48 X 34 X 50	860	1100	SS OR BB	280/127
BH1300	60 x 34 x 50	1100	1400	SS OR BB	310/140
BH1600	60 x 40 x 60	1250	1600	SS OR BB	410/186

\* Add 6" Height for Legs

See Price Schedule for Appropriate Bin Top

\*\* SS - All Stainless Steel with Polyethylene Liner.

BB - All Stainless Steel Except Galvanized Back and Bottom

This product qualifies for the following listings:



Rated in accordance with ARI standard 810-95

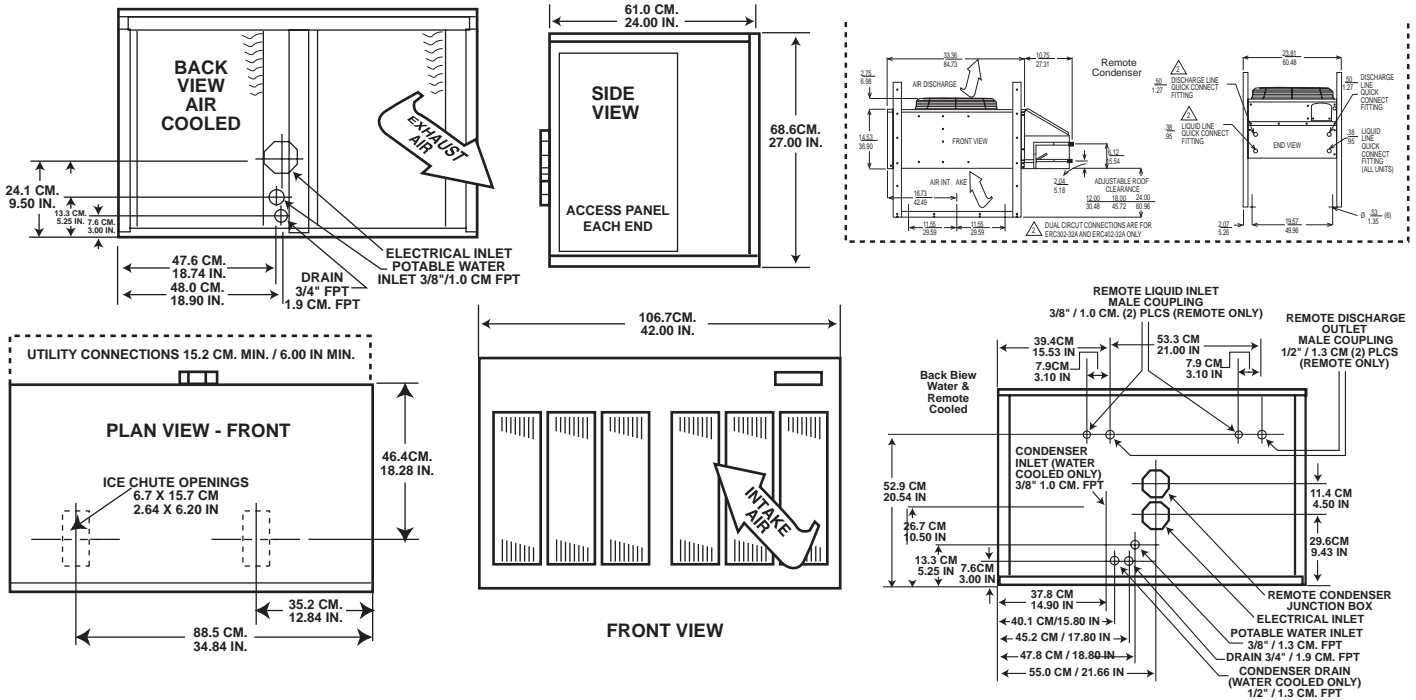
CERTIFIED



9001:2000

**Scotsman**™

# Ice Machine Specifications



INSTALLATION NOTE: Allow 6" minimum space at left side and back for ventilation and utility connections.

All models: Dimensions: W x D x H Unit: 42" x 24" x 27" Shipping Carton: 45 1/2" x 27 1/2" x 32"

Model Number	Basic Condenser Unit	Max. Fuse Electrical Volts/Hz/Phase	Size or HACR Circuit Breaker	Comp. HP	Circuit Wires	Min. Circuit Ampacity	Shipping Weight lbs./kg.	Power Consumption KWH/100 lbs. 90°/70°F	Water Usage Gallons/100 lbs. 90°/70°F	
									Potable	Condenser
FME2404AS-32B	AIR	208-230/60/1	25	1 1/2	2	20.6	395/180	3.26	12	-
FME2404WS-32B	WATER	208-230/60/1	25	1 1/2	2	19.5	390/178	2.45	12	66
FME2404RS-32B	REMOTE	208-230/60/1	30	1 1/2	2	23.1	425/194	3.40	12	-
FME2404AS-3B	AIR	208-230/60/3	20	1 1/2	3	14.9	395/180	3.00	12	-
FME2404WS-3B	WATER	208-230/60/3	20	1 1/2	3	13.8	390/178	2.19	12	66
FME2404 RS-3B	REMOTE	208-230/60/3	25	1 1/2	3	17.4	425/194	3.20	12	-

All units with Stainless Steel finish.  
Refrigerant: R-404A.

REMOTE CONDENSER— Comes with adjustable legs.  
Dimensions: W x D x H: 24.00" x 44.25" x 29.25"

Model Number	For Use With	Cond. Unit	Finish Basic	Electrical Volts/Hz/Phase	No. of Wires	Min. Circuit Ampacity	Max Fuse Size or HACR Circuit Braker
ERC302-32A	(1) FME2404	Air	Galvanized	208-230/60/1	2	2.6	15

PRE-CHARGED REFRIGERANT TUBE KITS: 25-Foot, RTE25 • 40-Foot, RTE40 • 75-Foot, RTE75, Refrigerant: R-404A.

Scotsman's ice machines are not designed for outdoor installations. Scotsman remote condensers are designed for outdoor installations.

Machine requires voltage indicated on rating name plate. Failures caused by improper voltage are not considered factory defects. Extended periods of operation at temperatures exceeding limitations constitutes misuse under the terms of Scotsman Manufacturer's Limited Warranty, resulting in a loss of warranty coverage. Specifications and design are subject to change without notice.

Consult Your Local SCOTSMAN Representative At:

## IMPORTANT OPERATING REQUIREMENTS:

	Minimum	Maximum
Air Temperatures	50°F (10°C)	100°F (37.7°C)
Water Temperatures	40°F (4.4°C)	100°F (37.7°C)
Remote Cond. Temps	-20°F (-28.9°C)	120°F (48.9°C)
Water Pressures	20 PSIG	120 PSIG
Electrical Voltage	-5%	+10%

**YOU'LL VALUE THE DIFFERENCE™**

775 Corporate Woods Parkway • Vernon Hills, IL 60061 • 1-800-SCOTSMAN • Fax: (847) 913-9844  
Visit our website at: [www.scotsman-ice.com](http://www.scotsman-ice.com) • E-mail: [customer.service@scotsman-ice.com](mailto:customer.service@scotsman-ice.com)

**Scotsman®**