

SCOTSMAN

MODULAR AIR, WATER, REMOTE COOLED NUGGET ICE MACHINE



NME1854

VOLUME PRODUCTION • 24 HOUR

Based on Air/Water Temperatures	Air-Cooled		Water-Cooled		Remote	
	70°/50° lbs./kg.	90°/70° lbs./kg.	70°/50° lbs./kg.	90°/70° lbs./kg.	70°/50° lbs./kg.	90°/70° lbs./kg.
NME1854-32	2130/966	1595/723	2185/991	1825/828	2400/1089	1800/816
NME1854-3	2130/966	1595/723	2185/991	1825/828	2400/1089	1800/816

SCOTSMAN'S NEW NUGGET ICE MACHINES with AutoSentry™

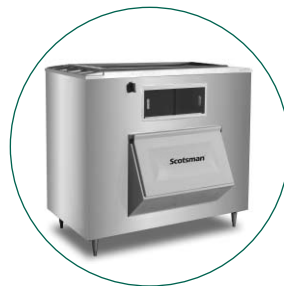
- AutoSentry™ Monitoring System constantly checks workload on gearbox shutting down system before a problem develops preventing costly repairs.
- Electrical conductivity water sensor eliminates low or no water failures and cannot be affected by adverse water conditions.
- Plastic drain pan with larger outlet provides greater ability to quickly channel water away preventing particulate build-up and rust.
- Rust and restriction free drain system features one-piece plastic drain tubes with larger ID for obstruction-free water flow.
- Durable, high grade stainless steel construction with massive, self-aligning spherical roller bearings; patented double-flight auger that evenly distributes the load; and heavy duty direct drive gearbox for high reliability and long life.

WARRANTY See your dealer for complete warranty details.

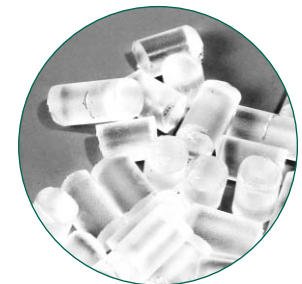
- 3 years parts on all components.
- 3 years labor on all components.
- 5 years parts on compressor.



BIN: BH900



BIN: BH1300



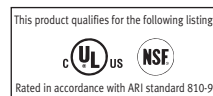
NUGGET ICE

Versatile, inexpensive to produce, used in carbonated beverages and salad bars.

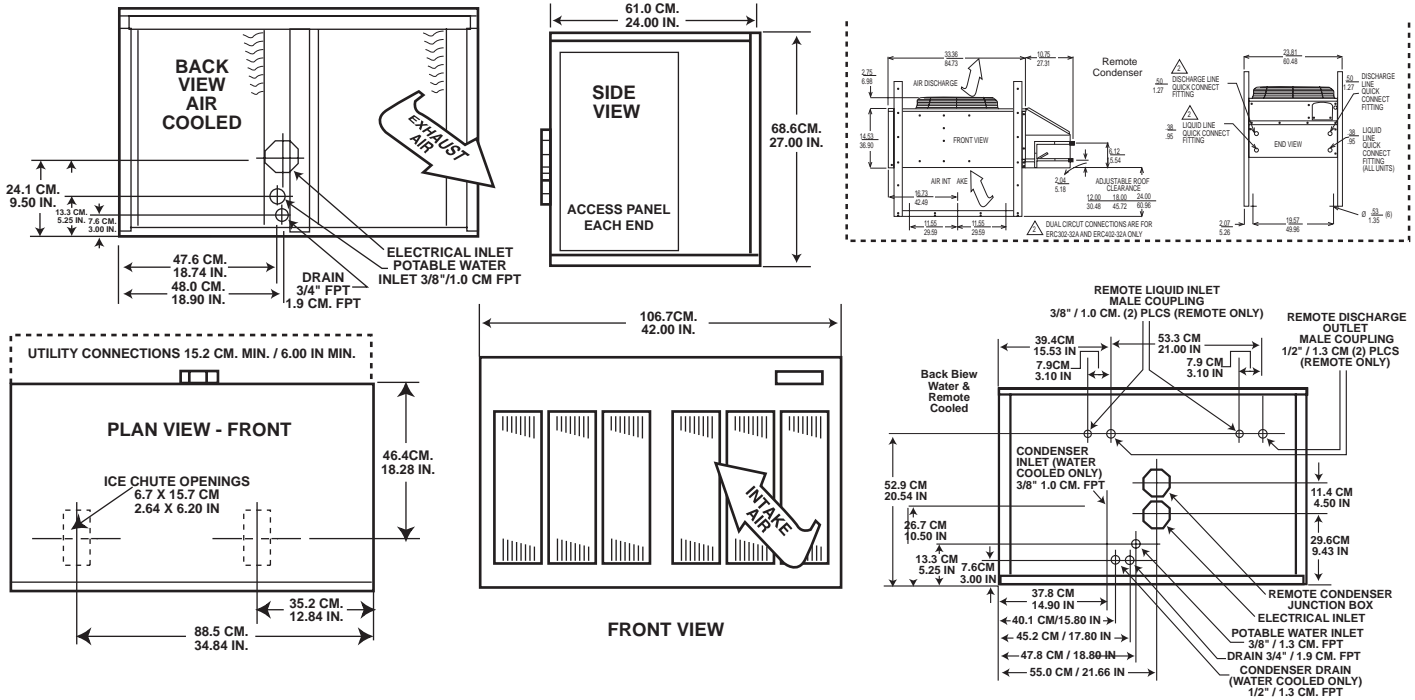
SCOTSMAN MODULAR BINS					
Model Number	Dimensions W"xD"xH" *	ARI Bin Capacity lbs.	Application Capacity lbs.	Finish **	Ship Weight lbs./kg.
BH800	42 x 31.5 x 44	580	740	SS or BB	165/75
BH900	48.2 x 33.75 x 44	740	940	SS or BB	185/84
BH1100	48 X 34 X 50	860	1100	SS or BB	280/127
BH1300	60 x 34 x 50	1100	1400	SS or BB	310/140
BH1600	60 x 40 x 60	1250	1600	SS or BB	410/186

* Add 6" Height for Legs See Price Schedule for Appropriate Bin Top

** SS - All Stainless Steel with Polyethylene Liner.
BB - All Stainless Steel Except Galvanized Back and Bottom



Ice Machine Specifications



INSTALLATION NOTE: Allow 6" minimum space at left side and back for ventilation and utility connections.

All models: Dimensions: W x D x H Unit: 42" x 24" x 27" Shipping Carton: 45 3/4" x 27 1/2" x 32"

Model Number	Condenser Unit	Basic Electrical Volts/Hz/Phase	Max. Fuse Size or HACR Circuit Breaker	Comp. HP	Circuit Wires	Min. Circuit Ampacity	Shipping Weight lbs./kg.	Power Consumption KWH/100 lbs. 90°F/70° F	Water Usage Gallons/100 lbs.	
									Potable 90°F/70° F	Condenser 90°F/70° F
NME1854AS-32B	AIR	208-230/60/1	25	1 1/2	2	20.6	395/180	3.94	12	-
NME1854WS-32B	WATER	208-230/60/1	20	1 1/2	2	13.8	390/178	2.65	12	80
NME1854RS-32B	REMOTE	208-230/60/1	30	1 1/2	2	23.1	425/194	3.87	12	-
NME1854AS-3B	AIR	208-230/60/3	20	1 1/2	3	14.9	395/180	3.63	12	-
NME1854WS-3B	WATER	208-230/60/3	20	1 1/2	3	13.8	390/178	2.65	12	80
NME1854RS-3B	REMOTE	208-230/60/3	25	1 1/2	3	17.4	425/194	3.57	12	-

All units with Stainless Steel finish.
Refrigerant: R-404A.

REMOTE CONDENSER – Comes with adjustable legs
Dimensions: W x D x H: 24.00" x 44.25" x 29.25"

Model Number	For Use With	Cond. Unit	Finish Basic	Electrical Volts/Hz/Phase	No. of Wires	Min. Circuit Ampacity	Max Fuse Size or HACR Circuit Breaker
ERC302-32A	(1) NME1854	Air	Galvanized	208-230/60/1	2	2.6	15

PRE-CHARGED REFRIGERANT TUBE KITS: 25-Foot, RTE25-25 • 40-Foot, RTE40-40 • 75-Foot, RTE75-75, Refrigerant: R-404A.

Scotsman's ice machines are not designed for outdoor installations. Scotsman remote condensers are designed for outdoor installations.

Machine requires voltage indicated on rating name plate. Failures caused by improper voltage are not considered factory defects. Extended periods of operation at temperatures exceeding limitations constitutes misuse under the terms of Scotsman Manufacturer's Limited Warranty, resulting in a loss of warranty coverage. Specifications and design are subject to change without notice.

Consult Your Local **SCOTSMAN** Representative At:

IMPORTANT OPERATING REQUIREMENTS:

	Minimum	Maximum
Air Temperatures	50°F (10°C)	100°F (37.7°C)
Water Temperatures	40°F (4.4°C)	100°F (37.7°C)
Remote Cond. Temps	-20°F (-28.9°C)	120°F (48.9°C)
Water Pressures	20 PSIG	120 PSIG
Electrical Voltage	-5%	+10%

YOU'LL VALUE THE DIFFERENCE™

775 Corporate Woods Parkway • Vernon Hills, IL 60061 • 1-800-SCOTSMAN • Fax: (847) 913-9844
Visit our website at: www.scotsman-ice.com • E-mail: customer.service@scotsman-ice.com

Scotsman®